

**Web thickness:**  
inside about 15 mm  
outside about 20 mm

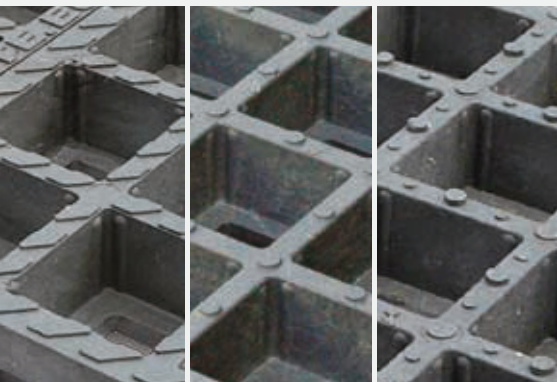
**Interlocking:** about 15 mm

Underside

**Dimensions:** 800 x 400 x 60 mm

## TTE<sup>®</sup>-MultiDrain<sup>PLUS</sup>

Profile of an ecological multitalent



There are 3 different pimpled surfaces obtainable for different requirements



Fine network: Weight 24 g/m<sup>2</sup>,  
Mesh size ≤ 4mm,  
Roller width 3.20m, material: PE

### Technical Data

Designation	TTE <sup>®</sup> -MultiDrain <sup>PLUS</sup> *) with a trapezoid interconnection, with pimples
Material	neutral to the environment made out of 100% recycled plastic (Duales System Deutschland AG)
Colour	grey - anthracite
Dimensions	about 80 x 40 x 6 cm with 32 chambers (size 8 x 8 cm), 1 m <sup>2</sup> = about 3.125 pieces.
Effective dimension	about 80 x 40 cm plus 1.5 cm for edge surfaces due to the interlocking
<b>Web thickness</b>	inside about 15 mm, outside about 20 mm
<b>Weight</b>	about 8.5 kg (about 26 kg/m <sup>2</sup> )
Loading capacity, static (under laboratory conditions)	about 147 kN (about 15 t) per test body (about 20 x 20 cm, consisting of 4 unfilled chambers) that is about 10 N/mm <sup>2</sup> tested by TÜV Süd
Upper side	slip-inhibiting pimpled webs
Underside	a wide T-support (about 4.2 cm)
Slopes / gradients	can be used without any difficulty up to about 10%; also for steeper slopes after consultation
Type No.	1351.4080
Max. delivery quantity per lorry	913.92 m <sup>2</sup> = 28 pallets with 102 pieces (32.64 m <sup>2</sup> ) on each (pallet size LxBxH: 123 x 85 x 225 cm)

\*) patent protected